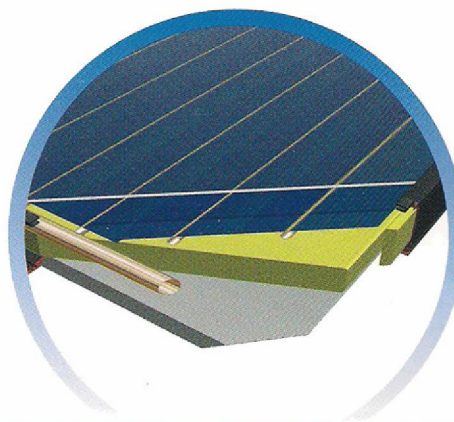


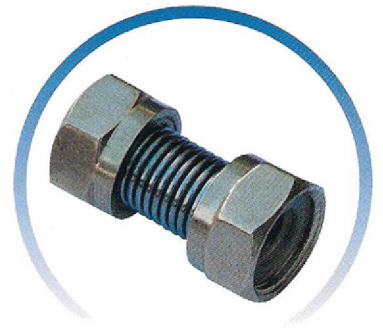
EnergySun

telefon: 0749.080.054
0247.416.485

email: contact@energy-sun.ro
www.energy-sun.ro



Flexible Connections



Wunder Premium



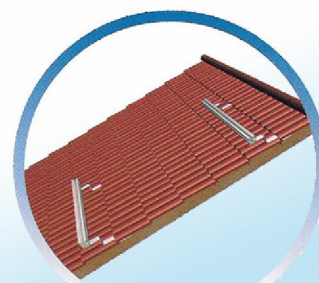
Technical Specifications

Specification/ Type	Wunder CLS 2108
Dimensions	1988x1041x90 mm
Casing Material	Electrostatic Painted Aluminium Case
Weight	37,2 kg
Sealing Material	EPDM & Silicone & ALUMINIUM FRAME
Gross Area	2,07 m ²
Aperture Area	1,92 m ²
Absorber Area	1,90 m ²
Absorber Material	Selective Coated Copper
Thickness	0,12 mm
Absorptance	%95
Emittance	%3
Welding Method	Ultrasonic welding
Heat carrier volume	1,07 liter
Diameter of Absorber Tube	8,0 mm / 10 mm / 1,27 mm
Absorber Tube Wall Thickness	0,45 mm
Diameter of Header Tube	18 mm / 22mm / 24mm
Header Tube Wall Thickness	0,70 mm
Number of Tubes	9
Tube pitch (mm)	110 mm
Glass Material	Low Iron Tempered Glass
Transmittance of Glass	%91
Thickness of Glass	4 mm
Insulation Material	Rock wool
Thermal Conductivity	0,037 W/(mK)
Heat Capacity of wool	0,84 kJ/(kgK)
Density of wool	40 density
Thickness of wool	40 mm
Stagnation Temperature at 1000 W/m ₂ and 30 °C	232°C
Max. Operation Pressure	10 bar
Test Pressure	20 bar
Pressure Loss	1,6bar
Nominal Flow Rate	105 liter/h
Base Sheathing	Embossed-finished Aluminium
Mounting Mode	Inroof, onto-roof, flat roof

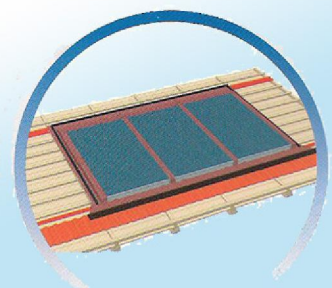
Available Mounting Sets



Flat Roof



Onto Roof

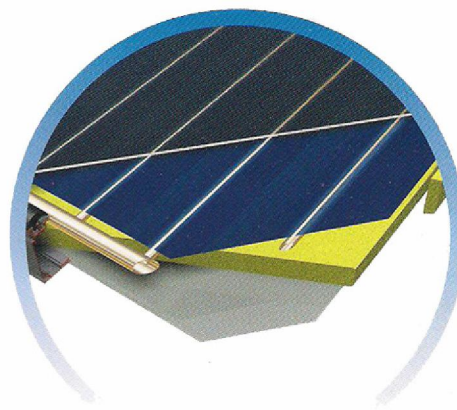


In Roof

EnergySun

telefon: 0749.080.054
0247.416.485

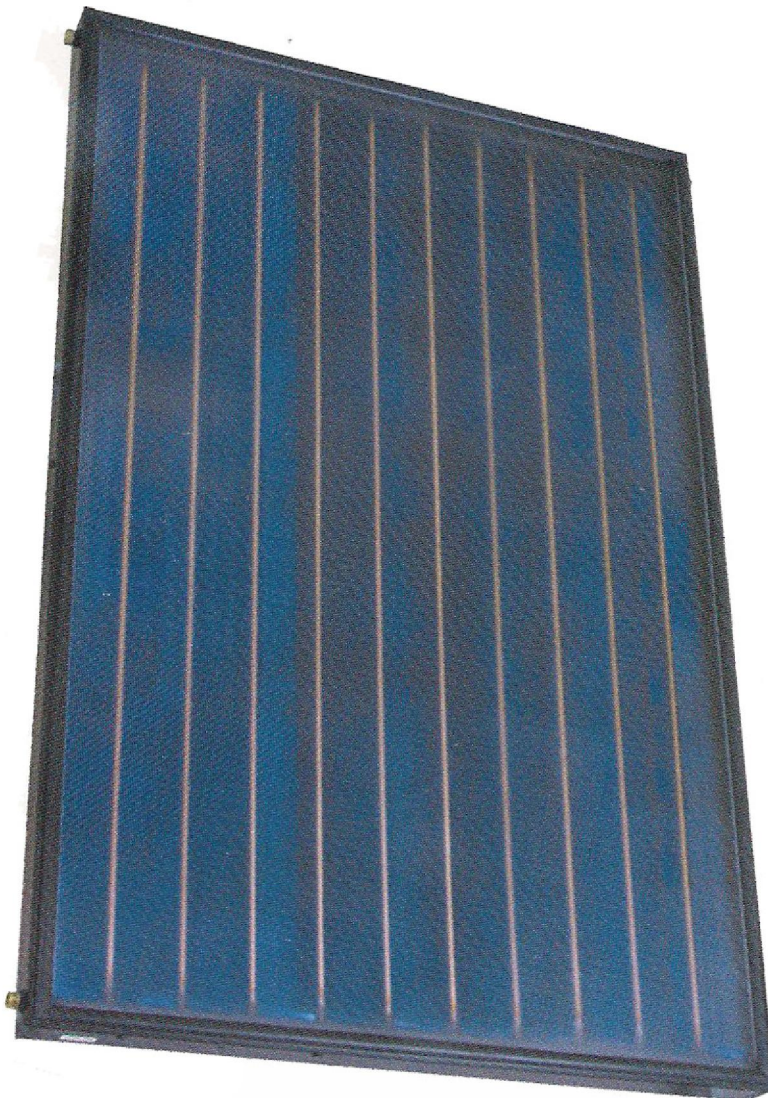
email: contact@energy-sun.ro
www.energy-sun.ro



Flexible Connections



Marvel Collectors



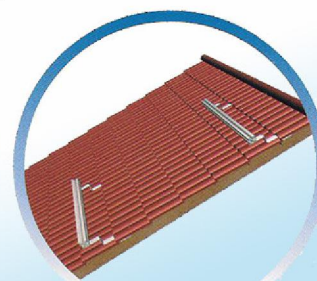
Technical Specifications

Specification/ Type	Marvel CLS 2108
Dimensions	2006x1059x105 mm
Casing Material	Electrostatic Painted Aluminium Case
Weight	40,5 kg
Sealing Material	EPDM & Silicone & ALUMINUM FRAME
Gross Area	2,12 m ²
Aperture Area	1,90 m ²
Absorber Area	1,88 m ²
Absorber Material	Full-face Selective Coated Copper
Thickness	0,20 mm
Absorptance	%95
Emittance	%3
Welding Method	Ultrasonic welding
Heat carrier volume	1,07 liter
Diameter of Absorber Tube	8,0 mm / 10 mm / 1,27 mm
Absorber Tube Wall Thickness	0,45 mm
Diameter of Header Tube	18 mm / 22mm / 24mm
Header Tube Wall Thickness	0,70 mm
Number of Tubes	9
Tube pitch (mm)	110 mm
Glass Material	Low Iron Tempered Glass
Transmittance of Glass	%91,00
Thickness of Glass	4 mm
Insulation Material	Rock wool
Thermal Conductivity	0,037 W/(mK)
Heat Capacity of wool	0,84 kJ/(kgK)
Density of wool	52 density
Thickness of wool	50 mm
Stagnation Temperature at 1000 W/m ₂ and 30 °C	232°C
Max. Operation Pressure	10 bar
Test Pressure	20 bar
Pressure Loss	1,6 bar
Nominal Flow Rate	105 liter/h
Base Sheathing	Embossed-finished Aluminium
Mounting Mode	Inroof, onto-roof, flat roof

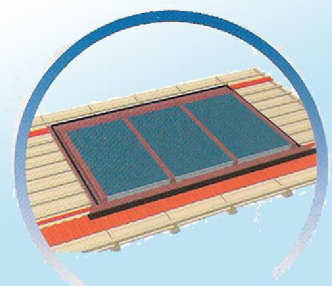
Available Mounting Sets



Flat Roof



Onto Roof



In Roof